

**Art and Artifacts Adoption Party II**  
**Trenton City Museum in Cadwalader Park**  
**Saturday, October 11, 2014**  
**6:30-8:30 pm**

***Welcome*** to the second Art and Artifacts Adoption Party of the Trenton Museum Society. At this event you will be able to view and underwrite the cost of framing, repairing or conserving rarely seen art and artifacts from the collection of the Trenton Museum Society and to contribute in other important ways. These items include books, prints, paintings and furniture. Participants will not only be able to view and discuss them with the experts on our staff and among our trustees in a relaxed and comfortable atmosphere, but they will be able to “adopt” them.

The following pages provide descriptions of the items you will see. Adopting an item of your choice helps the Trenton Museum Society defray the cost of framing, repair or conservation treatment. Your donation is tax deductible and your name will forever be associated with the piece on a label displayed with the piece. You may adopt in your name, jointly in combination with other adopters, in tribute to a friend or partner, in memory of a loved one, or to celebrate an occasion. Further instructions about adoption appear on the next page.

To our friends and guests, and lovers of Trenton’s history and fine arts, we hope you will enjoy attending the Art and Artifacts Adoption Party and will support this unique opportunity to contribute to the restoration and preservation of some of Trenton’s finest art and artifacts.

**Richard Willinger, President**

*Trenton Museum Society*

**Donna Carcaci Rhodes, Director**

*Trenton Museum Society*

*The Trenton Museum Society is a 501(c)(3) nonprofit organization,  
Federal Tax ID 23-7345797*

## *Instructions for Adopters*

1. Each item on display is accompanied by a label bearing the number assigned to the item in this catalogue. If there is a red dot on the label next to the item, it is no longer available. To adopt an item, mark the number in your catalog and bring it to the adoption desk and fill out an adoption form. A Trenton Museum Society trustee will be available to assist you.
2. You may share the cost of an item with a friend, or you may adopt a portion of any item with a minimum contribution of \$100. A gift receipt for your records, a certificate of adoption, and a bookplate memorializing your contribution will be prepared for each adoption, full or partial.
3. Payment may be made by cash, check payable to Trenton Museum Society, or credit card.
4. Many of the items on display are in fragile condition. Please ask a trustee to assist you in viewing them.

## **Books**

Trenton City Directories contain the names, addresses and occupations of residents of the City of Trenton, business names, addresses, principal officers and display advertisements, religious and social groups, and government agencies. They are used extensively for research by the Trenton Museum Society.

1. Webb Brothers & Co., *The Trenton Directory 1871*  
*Condition:* Half of binding missing.  
*Treatment:* Recase in repaired case incorporating remains of original spine cloth. \$200
2. Thomas F. Fitzgerald, *Fitzgerald's Trenton and Mercer County Directory*, 1880.  
*Condition:* Spine has come off.  
*Treatment:* Reback using spine scrap; repair front signatures; fill holes on page. \$100
3. Thomas F. Fitzgerald, *1884 Fitzgerald's Trenton and Mercer County Directory*  
*Condition:* Covers are loose; ripped map.  
*Treatment:* Recase and repair map. \$100
4. Thomas F. Fitzgerald, *1885-86 Fitzgerald's Trenton and Mercer County Directory*  
*Condition:* Spine is not attached; pages are loose.  
*Treatment:* Resew and recase. \$135
5. Thomas F. Fitzgerald, *1888-89 Fitzgerald's Trenton and Mercer County Directory*  
*Condition:* Front cover loose; back cover has come off; pages are loose.  
*Treatment:* Resew and recase. \$135
6. Thomas F. Fitzgerald, *1889 Fitzgerald's Trenton and Mercer County Directory*  
*Condition:* Spine is missing; covers have come off;

pages are loose.

*Treatment:* Resew and recase; make up spine and spine label. \$150

7. Thomas F. Fitzgerald, *1891 Fitzgerald's Trenton and Mercer County Directory*

*Condition:* Front cover has come off; pages are loose.

*Treatment:* Resew signatures and recase. \$125

8. Thomas F. Fitzgerald, *1893 Fitzgerald's Trenton and Mercer County Directory*

*Condition:* Back cover has come off.

*Treatment:* Recase using existing tape spine to reattach back board. \$50

9. Thomas F. Fitzgerald, *1894 Fitzgerald's Trenton and Mercer County Directory*

*Condition:* Spine is coming off; front cover is loose.

*Treatment:* Recase and repair front signatures. \$75

10. Thomas F. Fitzgerald, *1895 Fitzgerald's Trenton and Mercer County Directory*

*Condition:* Front and back covers are loose; spine is split; pages are loose; ripped map.

*Treatment:* Consolidate and recase; repair and reattach map. \$125

11. Thomas F. Fitzgerald, *1896 Fitzgerald's Trenton and Mercer County Directory*

*Condition:* Front cover is loose; spine is not attached.

*Treatment:* Reattach spine and reHINGE. \$50

## Artwork

12. Michael Smith. *“The Whip” ride in Cadwalader Park.*

*Description:* Photograph of two cars that held adults and children in an amusement park ride called “The Whip” in Cadwalader Park. This photograph was donated to the museum but cannot be displayed until it is framed.

*Treatment:* Frame in metal frame with archival mat and UV filtering glass. \$87

13. Fred Cospito. *Benjamin Whitmire.*

*Description:* Ben Whitmire (1925-2003) was the second Director of the Trenton City Museum, from 1979–1991. This portrait shows him as a young man. The oil painting was donated to the museum but cannot be displayed until it is framed.

*Treatment:* Frame in wooden frame. \$217

14. Phil McAuliffe. *Tom Malloy.*

*Description:* Four portraits of Trenton’s Artist Laureate Tom Malloy. A first-floor gallery at Ellarslie is named in his honor. These photographs were donated to the museum but cannot be displayed until they are framed.

*Treatment:* Each photo will be framed with archival mat and UV filtering glass. \$300



15. George A. Bradshaw (1880-1968). *Trenton Battle Monument Looking Down Warren St.*  
*Description:* George Bradshaw was one of the most prominent artists to live in Trenton. He taught at the Trenton School of Industrial Arts. This etching was donated to the museum but cannot be displayed until it is framed.  
*Treatment:* Frame in wooden frame with archival mat and UV filtering glass. \$113
16. George A. Bradshaw (1880-1968). *State and Warren Streets Looking West, in 1930's.*  
*Description:* See above.  
*Treatment:* Frame in wooden frame with archival mat and UV filtering glass. \$130
17. Dr. A. Ross Pittman (1883-1969). *DeCou Mansion.*  
*Description:* Dr. Pittman was a well-known Trenton artist. He studied with George A. Bradshaw at the School of Industrial Arts, but chose as his medium linoleum block printing. His full-time job was as a psychiatrist at Trenton Psychiatric Hospital. This print was donated to the museum but cannot be displayed until it is framed.  
*Treatment:* Frame in wooden frame with archival mat and UV filtering glass. \$146
18. *Dedication of the John A. Roebling Statue in Cadwalader Park.*  
*Description:* Nine men are standing in front of the statue of John A. Roebling in Cadwalader Park at its dedication ceremony on June 30, 1908. This photograph was donated to the museum but cannot be displayed until it is framed.  
*Treatment:* Frame in wooden frame with archival mat and UV filtering glass. \$224

19. Margaret Lowengrund (1905-1957). *Hudson River Bridge in Construction*. c. 1929  
*Description:* This etching shows the two towers of the George Washington Bridge while under construction.  
*Condition:* Mat and backing not acid-free; regular glass.  
*Treatment:* UV glass, acid-free mat, reinstall. \$56
20. Peggy Peplow Gummere (1912-1992). *Har Sinai Temple*. 1971  
*Description:* Peggy Peplow Gummere was a well-known Trenton artist who did a series of 14 pen-and-ink drawings of historic buildings in 1971 called "The Trenton Suite."  
*Condition:* Frame is chipped; regular glass.  
*Treatment:* Replace frame, UV glass, reinstall. \$100
21. Peggy Peplow Gummere (1912-1992). *Trenton Country Club Entrance*. 1971  
*Description:* See above.  
*Condition:* Frame is chipped, regular glass.  
*Treatment:* Replace frame, UV glass, reinstall. \$100
22. Peggy Peplow Gummere (1912-1992). *Mount Carmel Guild*. 1971  
*Description:* See above. *Condition:* Frame is chipped, regular glass.  
*Treatment:* Replace frame, UV glass, reinstall. \$100
23. Luigi Kasimir (1881-1962). *Brooklyn Bridge*. 1927  
*Description:* This etching shows the Brooklyn Bridge looking towards Manhattan with the Brooklyn docks in the foreground.  
*Condition:* Backing not acid-free, regular glass.  
*Treatment:* UV glass, reinstall. \$41
24. Otto Knirsch. *New Jersey Senate, 1859*.  
*Description:* This early lithograph of the interior of the New Jersey State Senate shows the portraits of each Senator. Printed by T. Sinclair's, Philadelphia.



*Condition:* Backing not acid-free, regular glass.

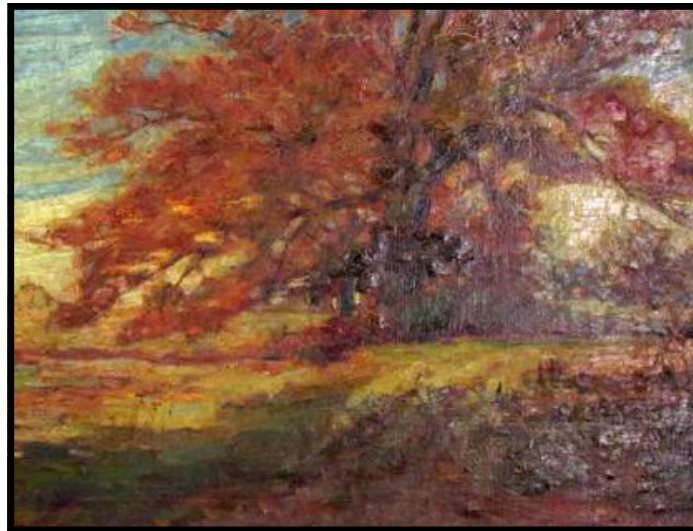
*Treatment:* UV glass, reinstall. \$56

25. Henry R. MacGinnis (1875-1962). *The Hermitage Oak*.

*Description:* This oil painting is by Henry R. McGinnis, an instructor and head of the Fine Arts Department at the Trenton School of Industrial Arts and a prominent painter.

*Condition:* Old varnish has discolored, canvas deformations, reticulation of paint layer, minor stains and scratches on painting, stretcher is missing keys, frame is badly damaged and flaking paint.

*Treatment:* Remove old discolored varnish and residual dirt from surface of painting with organic solvents, bring paint layer back to plane, restretch painting back onto original stretcher, replace missing keys, apply isolation coat of light molecular weight synthetic resin, fill any areas necessary with reversible vinyl, retouch, apply final coats of non-yellowing UV-inhibiting synthetic resin varnishes, apply protective acid free foamcore to back of stretcher, remove loose paint from surface of frame and stabilize, fill and inpaint damaged areas of frame or repaint. \$550



26. Tom Malloy (1912-2008). *Friends Meeting House*.

*Description:* Tom Malloy was a prominent Trenton artist who painted many scenes of Trenton. This watercolor shows the 18<sup>th</sup> century Friends Meeting House in Trenton.

*Condition:* Mat not acid-free, regular glass.

*Treatment:* Acid-free mat, UV glass, reinstall. \$62

27. Marguerite Doernbach. *Sunlit Branches in Cadwalader Park*. 1979

*Description:* This watercolor is by Marguerite Doernbach, a well-known Trenton artist.

*Condition:* Backing not acid-free, missing glass.

*Treatment:* Acid-free mat, spacers, UV glass, reinstall.  
\$160

## **John A. Roebling's Sons Company at the 1939 New York World's Fair**

Trenton's largest manufacturer, the John A. Roebling's Sons Company, builder of the Brooklyn Bridge, George Washington Bridge, Golden Gate Bridge and many others, sponsored an exhibit at the 1939 World's Fair in New York City. Seven large oil paintings – of the Brooklyn Bridge, George Washington Bridge and interior factory scenes - were included in the exhibit. The artist is unknown. Mercer County obtained these paintings when they acquired the Roebling Company's offices and converted them into the county's Administrative Building. In 1982 they donated the paintings to the Trenton City Museum. Two of the paintings are on long-term loan to the Roebling Museum in Roebling, NJ.

### *28. Brooklyn Bridge.*

*Description:* Oil painting. Circular view of the Brooklyn Bridge. 54" x 54"

*Condition:* Old pine resin varnish has discolored, minor stains and scratches in painting.

*Treatment:* Remove old discolored varnish and residual dirt from surface of painting, apply isolation coat of light molecular weight synthetic resin, conservatively inpaint and/or retouch any necessary areas with reversible restoration colors, apply final coats of non-yellowing UV-inhibiting synthetic resin varnishes. \$600

**Currently on loan to the New Jersey State Museum for the exhibit "New Jersey on Display: World's Fairs and the Garden State."**

### *29. George Washington Bridge. Description:* Oil painting. Circular view of the George Washington Bridge. 54" x 54"

*Condition:* Old pine resin varnish has discolored, minor stains and scratches in painting

*Treatment:* Remove old discolored varnish and residual

dirt from surface of painting, apply isolation coat of light molecular weight synthetic resin, conservatively inpaint and/or retouch any necessary areas with reversible restoration colors, apply final coats of non-yellowing UV-inhibiting synthetic resin varnishes. \$600

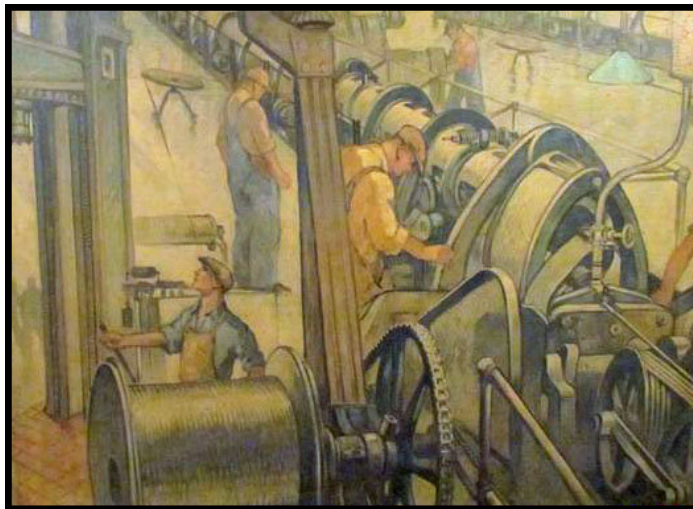
**Currently on loan to the New Jersey State Museum for the exhibit “New Jersey on Display: World’s Fairs and the Garden State.”**

30. *Workers testing wire rope inside the Roebling factory.*

*Description:* Oil painting. Interior scene at Roebling factory shows workers testing the strength of wire. One worker stands behind a large spool of wire looking up. 50” x 63”

*Condition:* Old pine resin varnish has discolored, minor stains and scratches in painting.

*Treatment:* Remove old discolored varnish and residual dirt from surface of painting, apply isolation coat of light molecular weight synthetic resin, conservatively inpaint and/or retouch any necessary areas with reversible restoration colors, apply final coats of non-yellowing UV-inhibiting synthetic resin varnishes. \$700



31. *Workers testing wire rope inside the Roebling factory.*

*Description:* Oil painting. Interior scene at Roebling factory shows workers testing the strength of wire. One worker holds a clipboard next to a large pressure gauge; another worker rolls a spool of wire. 50" x 74"

*Condition:* Old pine resin varnish has discolored, minor stains and scratches in painting.

*Treatment:* Remove old discolored varnish and residual dirt from surface of painting, apply isolation coat of light molecular weight synthetic resin, conservatively inpaint and/or retouch any necessary areas with reversible restoration colors, apply final coats of non-yellowing UV-inhibiting synthetic resin varnishes. \$800

## **Map of Trenton**

32. M. Dripps, Publisher, Philadelphia. *Map of the City of Trenton, 1849.*

*Description:* A large early map of the City of Trenton. Black lithography ink with hand- coloring on woven paper lined to canvas.

*Condition:* Discolored paper, multiple tears at top and bottom edges, paper support is cracked and creased, severe overall planar distortion, water damage has left a very dark brown tideline on the bottom third of the map, mold has damaged and faded the paper and media, yellow discolored varnish which has been cracked and abraded, embedded surface dirt and grime, backing board is made of plywood.

*Treatment:* Surface clean map, reduce varnish as much as possible, wash map to reduce discoloration plus stains and acidity, remove linen lining from paper, reduce residual adhesive, line map with mulberry paper and wheat starch paste and dry flat, inpaint media losses, hinge map to ragboard backing, construct a sealed package with UV-filtering acrylic glazing, acrylic spacers, the hinged map, an alkaline backing and Marvelseal on the back, put in a new frame. \$4,100

**Note: At the 2012 Art & Artifacts Adoption Part, \$810 was contributed by three couples for the restoration of this map. An additional \$3,290 is needed for the restoration to occur.**

## **Display Cases and Artifact Processing**

In 2004, the Trenton Museum Society custom-built 16 beautiful wood and glass cases to display historical exhibits at the museum. Twelve of these cases were sponsored by friends and trustees of the Museum Society. All sixteen have been used for the past ten years to display numerous historical exhibits in the second floor galleries. There are only four cases that remain to be sponsored. The sponsor's name (or names) will be listed on a brass plaque on the case. The sponsor (or sponsors) will be entitled to display his or her collection(s) subject to approval by the Museum Society for suitability, for a six-month period.



- 33. Display case for exhibits.  
*Sponsorship:* 3 feet wide, 3 shelves. \$1,350
- 34. Display case for exhibits.  
*Sponsorship:* 4 ½ feet wide, 3 shelves. \$2,000
- 35. Display case for exhibits.  
*Sponsorship:* 4 ½ feet wide, 3 shelves. \$2,000
- 36. Display case for exhibits.  
*Sponsorship:* Wall case – 8 feet wide, 2-3 shelves. \$2,500

37. Intern to process artifacts.

*Description:* In the past, an intern from the museum studies program at Seton Hall University has processed artifacts and artwork that have been donated to the Museum Society's collection. A trained professional is needed to process art and artifacts.

*Sponsorship:* 25 hours of time. \$250

38. Intern to process artifacts.

*Description:* See above.

*Sponsorship:* 25 hours of time. \$250



## Victorian Room



### 39. Sofa.

*Description:* Victorian-era sofa with elaborate carving on rosewood frame and raspberry colored silk upholstery. Purchased from Ulrich Funeral Home, 425 Greenwood Avenue, Trenton, in 1979. Prior to 1959 it belonged to Eleanor Vaux.

*Condition:* Springs have pushed through bottom covering.

*Treatment:* Re-tie springs and reattach bottom fabric.

\$325

### 40. Conservation Cleaning.

*Description:* The Victorian Room contains an end table, lamps, sofa, pedestal, vases, framed lithograph, tall case clock, side chair, commode, wood entry door and frame, love seat, desk, framed portrait, stick-back chair, tea box, small stool, marble mantel, brass candlesticks, mantel clock, two busts, large framed mirror, bowl, small plate, early piano, small table, four chairs, coffee service (coffee pot, creamer, sugar bowl, napkins, spoons), oriental style rug, chandelier, stained-glass window and wainscoting.

*Condition:* Dirt, dust, heat and humidity gradually degrade all objects. It is necessary to periodically clean

objects in the collection that are exposed to these conditions.

*Treatment:* All items in the Victorian Room will be treated using lint free cloths, brushes for light particulate removal, and Vulpex (a non-corrosive, non-foaming, non-hazardous, germicidal, non-acidic insecticidal formulation.) Recommendations for best practices, sources for materials and a written housekeeping and collections care manual will be provided. \$630

## **Trenton Museum Society Board of Trustees**

President: Richard Willinger

Vice-President: Jean Shaddow

Recording Secretary: Jean Bickal

Treasurer: Paul Provost

Corresponding Secretary: Marlene Barnhart

Mathew Bastian	Richard Hunter	Alma Ortiz
David Bosted	Sandra Lewis	Susan Parris
Chris Casarona	Joseph Longino	Joan Perkes
David Chiacchio	MileeMedina	Judith Sears
Diane Ciccone	Jane Malloy	Bobbie Shelingoski
Karl Flesch	Elizabeth McCue	Brenda Springsted
Carol Hill	Michael Newman	Carolyn Stetson

## **Advisory Board**

Christopher Brashier

Carol Cruickshanks

Robert Cunningham

Martha Press

**Director:** Donna Carcaci Rhodes

**Assistant to the Board:** Sally Baxter

**Docent:** James Strobel

## **Art & Artifacts Adoption Party Committee**

Marlene Barnhart

Michael Newman

Sally Baxter

Alma Ortiz

Carol Hill

Jean Shaddow

Millee Medina

**With special thanks to Richard Willinger, Chair, Collections Management Committee, and Karl Flesch, Collections Management Committee.**



Ellarslie Mansion is owned and maintained by the City of Trenton.

Funding support for Trenton City Museum operations is provided by members and patrons of the Trenton Museum Society and, in part, by the Geraldine R. Dodge Foundation, the I Am Trenton Foundation, the Mercer County Cultural and Heritage Commission through funding from the Mercer County Board of Chosen Freeholders, the Princeton Area Community Foundation, and the New Jersey State Council on the Arts/Department of State, a partner agency of the National Endowment of the Arts. The Trenton Museum Society received an operating support grant from the New Jersey Historical Commission, a division of the Department of State.

Trenton Museum Society, PO Box 1034, Trenton, NJ 08606  
(609) 989-1191 or (609) 989-3632

Email: [tms@ellarslie.org](mailto:tms@ellarslie.org)

Website: [www.ellarslie.org](http://www.ellarslie.org)